

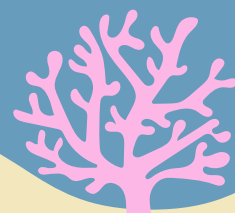
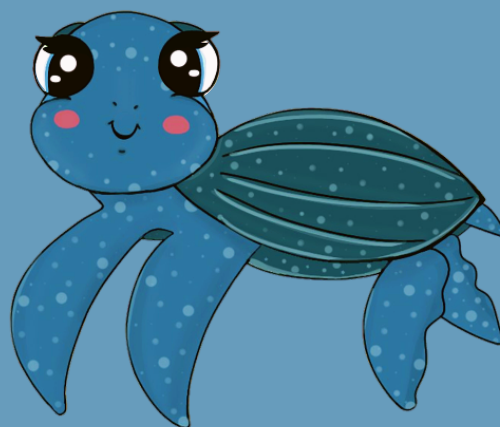
Realização:



# PROJETO **FAUNAMAR**

APRESENTA

**AS TARTARUGAS MARINHAS PARA  
OS PEQUENOS!**



A cartoon green sea turtle with large, expressive eyes, a friendly smile, and rosy cheeks. It has a brown and orange patterned shell and green flippers with dark spots. It is swimming in a blue ocean with wavy lines representing water.

**Olá! Eu me chamo Beca!  
Sou uma tartaruga-verde!**

**Neste Dia das Crianças, a  
galera do Projeto  
FaunaMar preparou  
um material super legal!**

A cartoon blue sea turtle with large, expressive eyes, a friendly smile, and rosy cheeks. It has a dark blue shell with white spots and blue flippers with white spots. It is swimming in a blue ocean with wavy lines representing water. In the background, there is a school of small blue fish and some green seaweed on the sandy ocean floor.

**Eu me chamo Yá,  
e sou maior tartaruga  
marinha desse mundo!**

**Agora que já nos  
conhecemos, que tal  
mergulharmos na  
diversão? Vamos!**

Oi amiguinho! Preciso depositar meus ovos na praia! Você pode me ajudar a chegar até lá?





# CRUZADINHA

Siga os desenhos para completar os quadrinhos!

The crossword puzzle grid consists of the following structure of empty cells:

- Row 1: 10 cells (Clue 1)
- Row 2: 10 cells (Clue 2)
- Row 3: 10 cells (Clue 3)
- Row 4: 10 cells (Clue 3)
- Row 5: 10 cells (Clue 3)
- Row 6: 10 cells (Clue 3)
- Row 7: 10 cells (Clue 3)
- Row 8: 10 cells (Clue 3)
- Row 9: 10 cells (Clue 3)
- Row 10: 10 cells (Clue 3)
- Row 11: 10 cells (Clue 3)
- Row 12: 10 cells (Clue 3)
- Row 13: 10 cells (Clue 3)
- Row 14: 10 cells (Clue 3)
- Row 15: 10 cells (Clue 3)
- Row 16: 10 cells (Clue 3)
- Row 17: 10 cells (Clue 3)
- Row 18: 10 cells (Clue 3)
- Row 19: 10 cells (Clue 3)
- Row 20: 10 cells (Clue 3)
- Row 21: 10 cells (Clue 3)
- Row 22: 10 cells (Clue 3)
- Row 23: 10 cells (Clue 3)
- Row 24: 10 cells (Clue 3)
- Row 25: 10 cells (Clue 3)
- Row 26: 10 cells (Clue 3)
- Row 27: 10 cells (Clue 3)
- Row 28: 10 cells (Clue 3)
- Row 29: 10 cells (Clue 3)
- Row 30: 10 cells (Clue 3)
- Row 31: 10 cells (Clue 3)
- Row 32: 10 cells (Clue 3)
- Row 33: 10 cells (Clue 3)
- Row 34: 10 cells (Clue 3)
- Row 35: 10 cells (Clue 3)
- Row 36: 10 cells (Clue 3)
- Row 37: 10 cells (Clue 3)
- Row 38: 10 cells (Clue 3)
- Row 39: 10 cells (Clue 3)
- Row 40: 10 cells (Clue 3)
- Row 41: 10 cells (Clue 3)
- Row 42: 10 cells (Clue 3)
- Row 43: 10 cells (Clue 3)
- Row 44: 10 cells (Clue 3)
- Row 45: 10 cells (Clue 3)
- Row 46: 10 cells (Clue 3)
- Row 47: 10 cells (Clue 3)
- Row 48: 10 cells (Clue 3)
- Row 49: 10 cells (Clue 3)
- Row 50: 10 cells (Clue 3)
- Row 51: 10 cells (Clue 3)
- Row 52: 10 cells (Clue 3)
- Row 53: 10 cells (Clue 3)
- Row 54: 10 cells (Clue 3)
- Row 55: 10 cells (Clue 3)
- Row 56: 10 cells (Clue 3)
- Row 57: 10 cells (Clue 3)
- Row 58: 10 cells (Clue 3)
- Row 59: 10 cells (Clue 3)
- Row 60: 10 cells (Clue 3)
- Row 61: 10 cells (Clue 3)
- Row 62: 10 cells (Clue 3)
- Row 63: 10 cells (Clue 3)
- Row 64: 10 cells (Clue 3)
- Row 65: 10 cells (Clue 3)
- Row 66: 10 cells (Clue 3)
- Row 67: 10 cells (Clue 3)
- Row 68: 10 cells (Clue 3)
- Row 69: 10 cells (Clue 3)
- Row 70: 10 cells (Clue 3)
- Row 71: 10 cells (Clue 3)
- Row 72: 10 cells (Clue 3)
- Row 73: 10 cells (Clue 3)
- Row 74: 10 cells (Clue 3)
- Row 75: 10 cells (Clue 3)
- Row 76: 10 cells (Clue 3)
- Row 77: 10 cells (Clue 3)
- Row 78: 10 cells (Clue 3)
- Row 79: 10 cells (Clue 3)
- Row 80: 10 cells (Clue 3)
- Row 81: 10 cells (Clue 3)
- Row 82: 10 cells (Clue 3)
- Row 83: 10 cells (Clue 3)
- Row 84: 10 cells (Clue 3)
- Row 85: 10 cells (Clue 3)
- Row 86: 10 cells (Clue 3)
- Row 87: 10 cells (Clue 3)
- Row 88: 10 cells (Clue 3)
- Row 89: 10 cells (Clue 3)
- Row 90: 10 cells (Clue 3)
- Row 91: 10 cells (Clue 3)
- Row 92: 10 cells (Clue 3)
- Row 93: 10 cells (Clue 3)
- Row 94: 10 cells (Clue 3)
- Row 95: 10 cells (Clue 3)
- Row 96: 10 cells (Clue 3)
- Row 97: 10 cells (Clue 3)
- Row 98: 10 cells (Clue 3)
- Row 99: 10 cells (Clue 3)
- Row 100: 10 cells (Clue 3)

Clues and illustrations:

- 1: Green sea turtle (arrow pointing down)
- 2: Blue dolphin (arrow pointing right)
- 3: Pink whale (arrow pointing down)
- 4: Blue dolphin (arrow pointing down)
- 5: Red octopus (arrow pointing right)
- 6: Red crab (arrow pointing right)
- 7: Yellow pufferfish (arrow pointing left)
- 8: Purple seahorse (arrow pointing down)

Esta atividade é de propriedade autoral do projeto FaunaMar.

# JOGO DOS 7 ERROS



Esta atividade é de propriedade autoral do projeto FaunaMar.

# CAÇA-PALAVRAS



Procure no quadrinho abaixo as palavras que representam os animais.

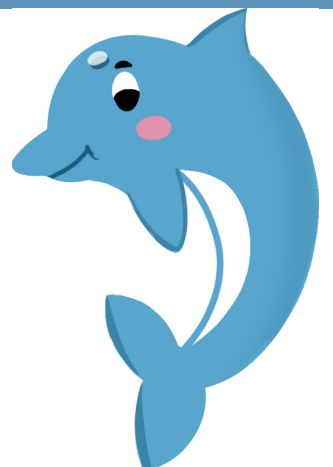
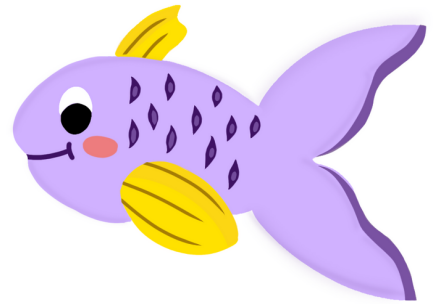
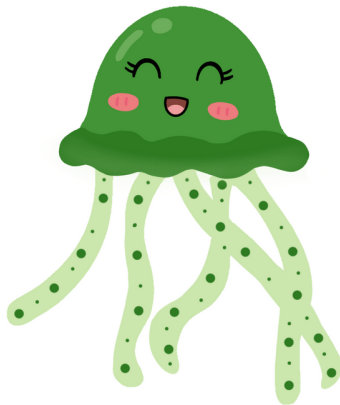
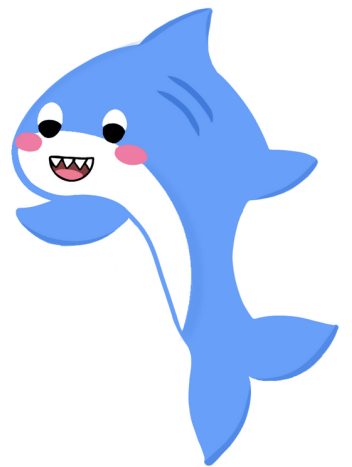
G	T	A	R	T	A	R	U	G	A
F	U	Z	X	U	A	D	N	J	G
C	B	A	I	A	C	U	P	M	U
V	A	F	V	F	O	Z	O	V	A
C	R	F	C	T	H	G	L	S	V
C	Ã	B	B	T	A	K	V	Z	I
G	O	L	F	I	N	H	O	T	V
Y	B	A	L	E	I	A	K	V	A



Esta atividade é de propriedade autoral do projeto FaunaMar.

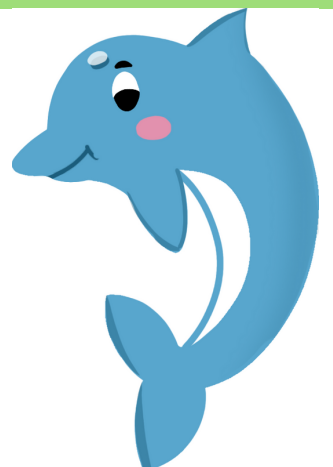
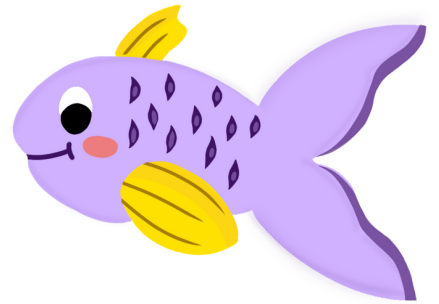
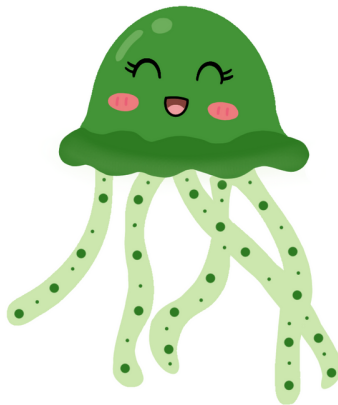
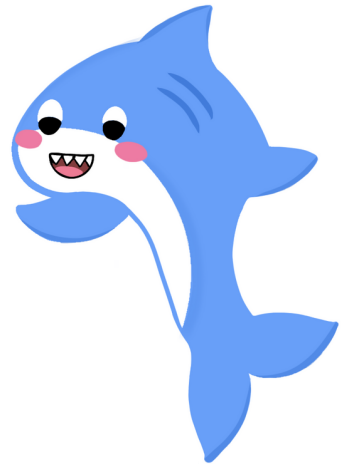
# JOGO DA MEMÓRIA

Imprima e cole essa imagem na folha verso.



# JOGO DA MEMÓRIA

Imprima e cole essa imagem na folha verso.





# JOGO DA MEMÓRIA

## Folha Verso

Projeto

**FAUNAMAR**

Pesquisa e conservação da fauna marinha PI/CE

Projeto

**FAUNAMAR**

Pesquisa e conservação da fauna marinha PI/CE

Projeto

**FAUNAMAR**

Pesquisa e conservação da fauna marinha PI/CE

Projeto

**FAUNAMAR**

Pesquisa e conservação da fauna marinha PI/CE

Projeto

**FAUNAMAR**

Pesquisa e conservação da fauna marinha PI/CE

Projeto

**FAUNAMAR**

Pesquisa e conservação da fauna marinha PI/CE

Projeto

**FAUNAMAR**

Pesquisa e conservação da fauna marinha PI/CE

Projeto

**FAUNAMAR**

Pesquisa e conservação da fauna marinha PI/CE

Projeto

**FAUNAMAR**

Pesquisa e conservação da fauna marinha PI/CE

Projeto

**FAUNAMAR**

Pesquisa e conservação da fauna marinha PI/CE

Projeto

**FAUNAMAR**

Pesquisa e conservação da fauna marinha PI/CE

Projeto

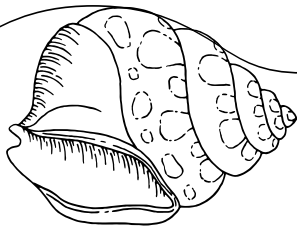
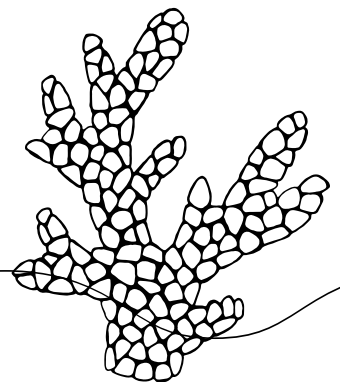
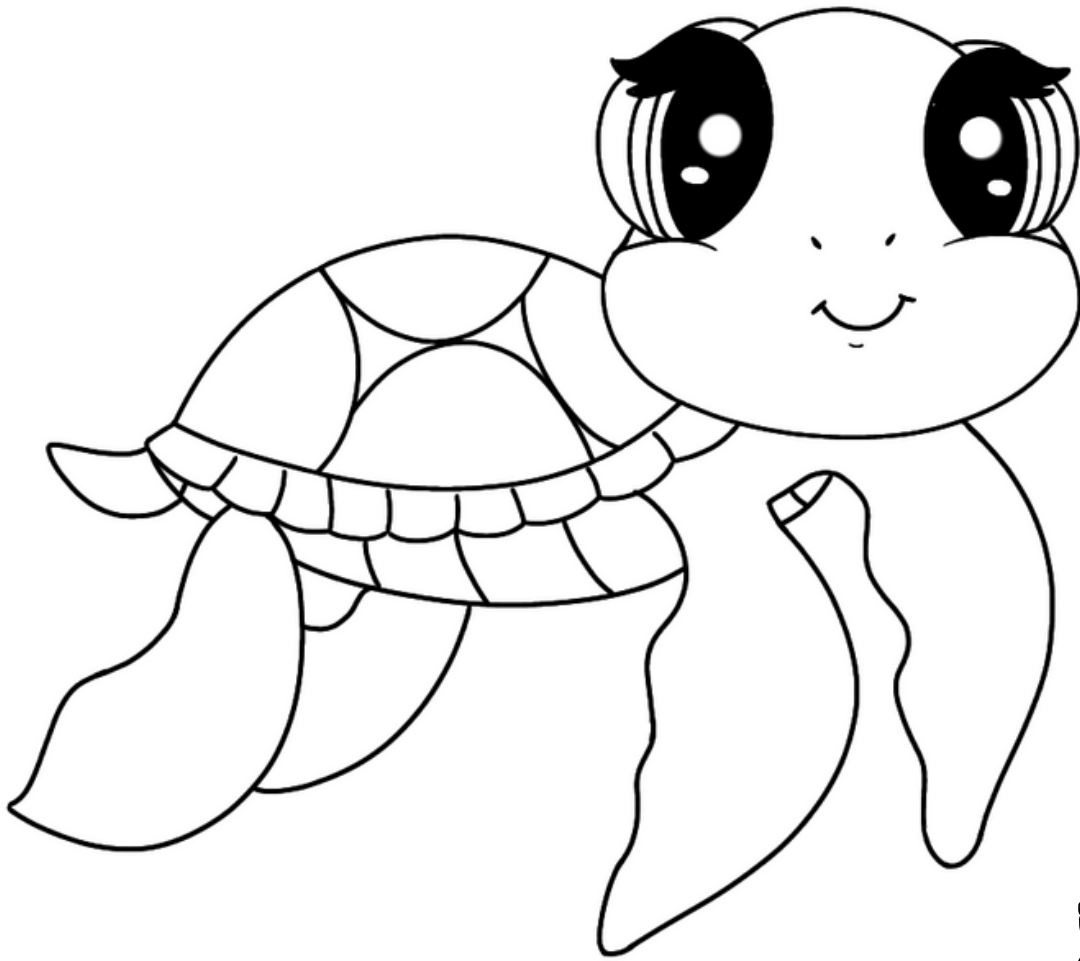
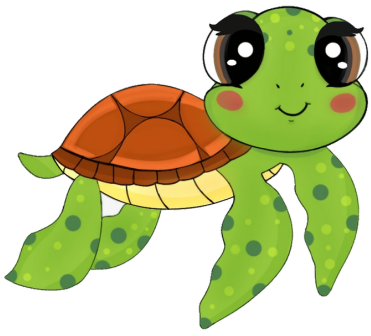
**FAUNAMAR**

Pesquisa e conservação da fauna marinha PI/CE

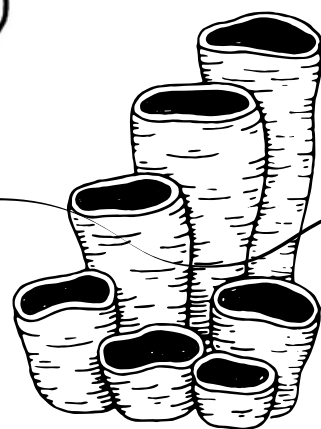
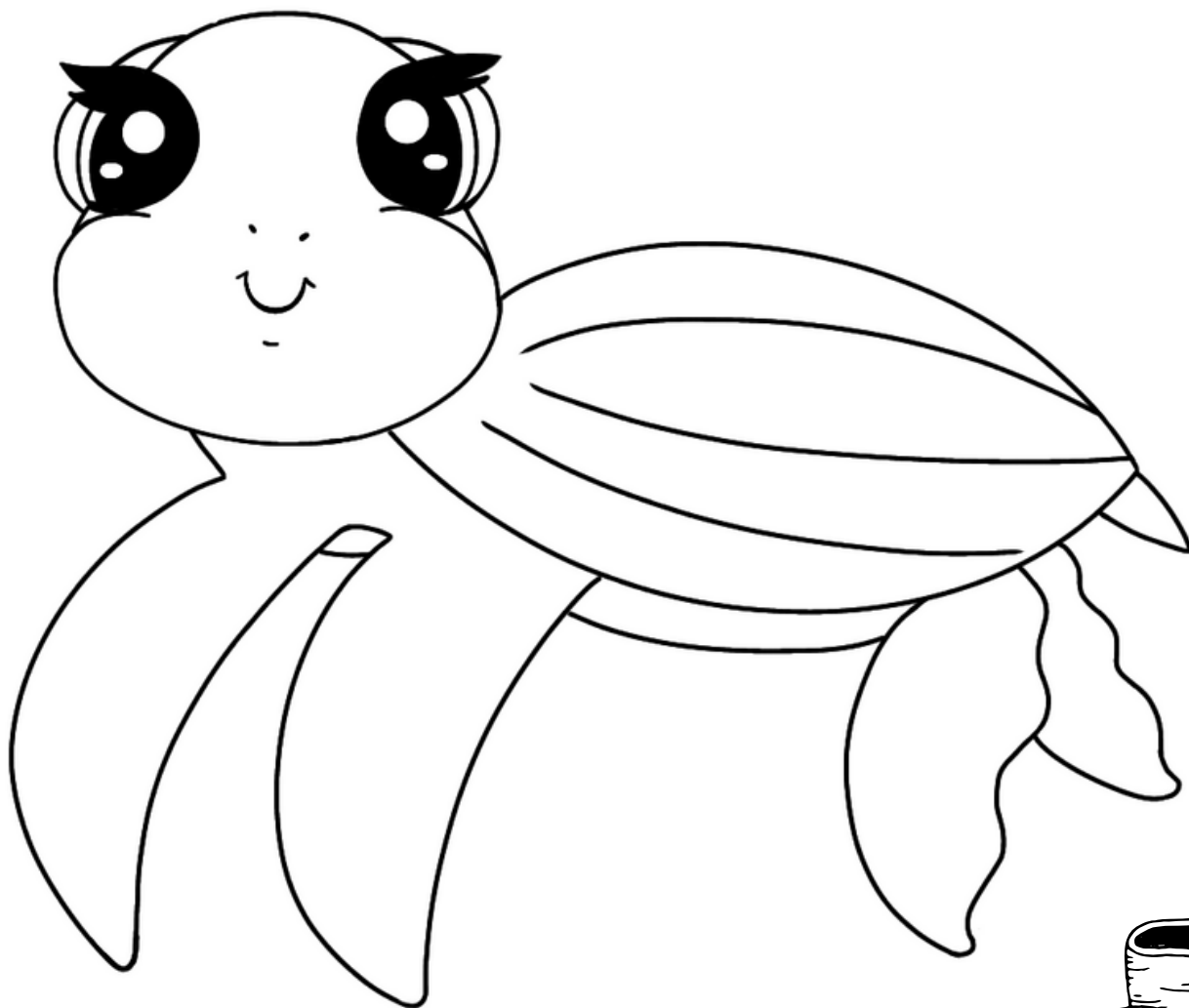
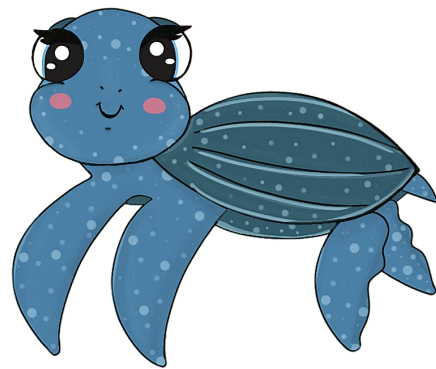
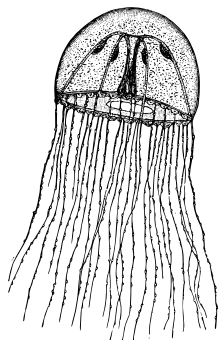


**Olá pessoal! Eu sou o Zé Oliva!  
Vamos usar a criatividade para colorir  
minhas outras amiguinhas tartarugas!  
Preparados?**

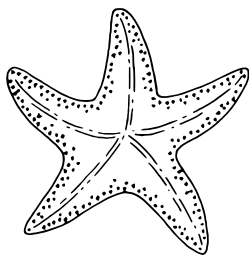
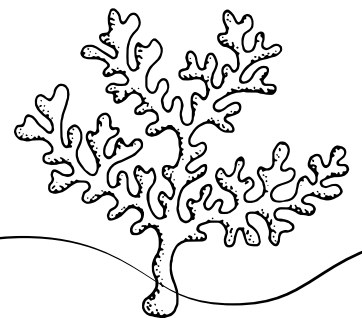




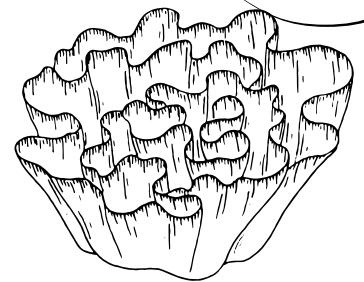
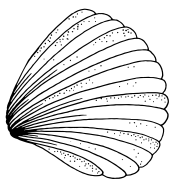
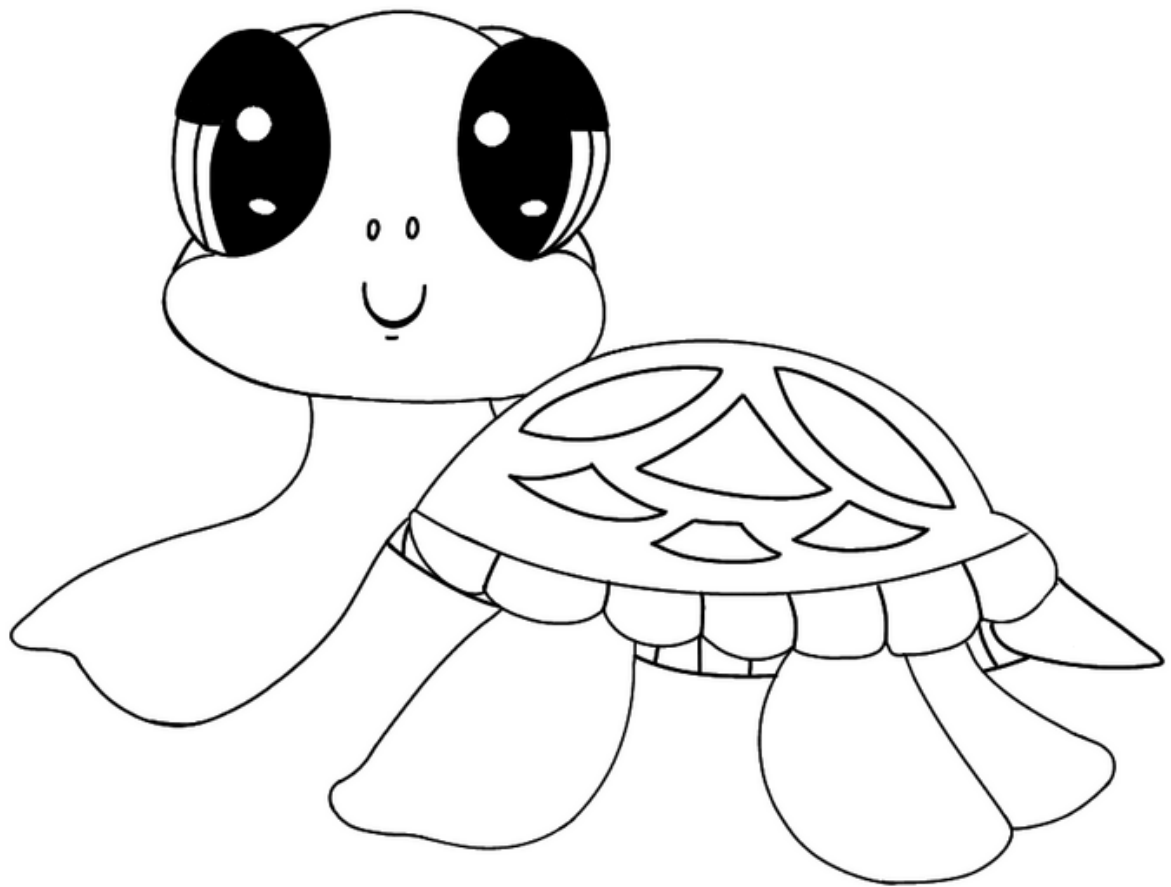
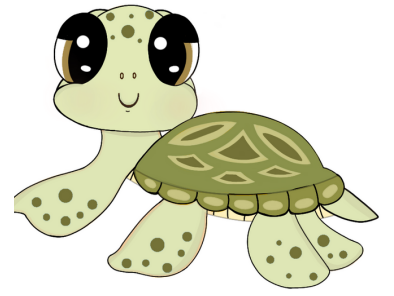
Esta atividade é de propriedade autoral do projeto FaunaMar.



Esta atividade é de propriedade autoral do projeto FaunaMar.



Esta atividade é de propriedade autoral do projeto FaunaMar.



Esta atividade é de propriedade autoral do projeto FaunaMar.

Realização:



**Que mergulho sensacional!  
Vamos convidar outros  
amigos para brincar?**

**Divulga seu desenho e  
marque a @comissãoilhaativa!  
Vamos repostar todos!  
Até a próxima aventura!**

